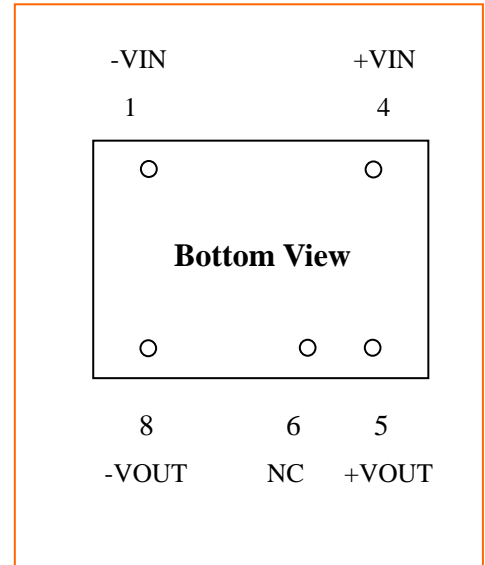


CTC COIL TECHNOLOGY CORPORATION

DC/DC CONVERTER CG-XXXX SERIES 1.25W SINGLE OUTPUT

ELECTRICAL SPECIFICATIONS: UNREGULATED

- Input voltage range ----- $\pm 10\%$
- Input filter----- Capacitor.
- Output voltage accuracy ----- $\pm 5\%$
- Line voltage regulation ----- 1.2%Typ./1%Of Vin
- Load voltage regulation (10% ~ 100%)-
5V Output Types----- 15% Max.
9V,12V and 15V Output Types----- 10% Max.
- Ripple&noise/20MHZ BW ----- 75mV P-P Max.
- Efficiency at full load----- 70% Min.
- Isolation voltage ----- 1000 Vdc Min.
- Short circuit protection ----- 1.0 Second
- Operating temperature range ----- -40°C to 85°C
- Storage temperature range ----- -55°C to 125°C
- Isolation resistance ----- 10G Ω
- Isolation capacity ----- 75pF Typ.
- Package weight----- 1.8g

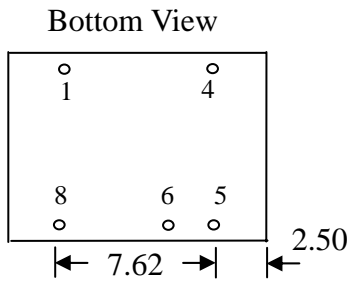
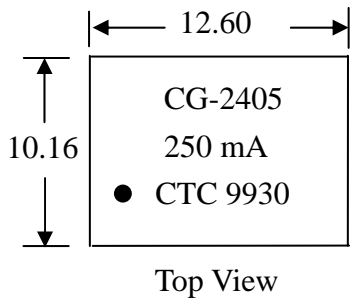


*Note: Measured @ 25 With The Condition of Vin = Nominal And Full Load.

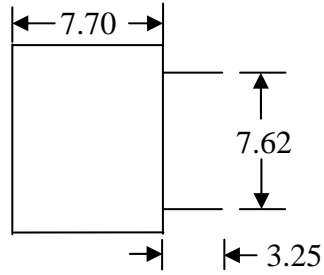
Note: Add/H after P/N for isolation 2KVdc

Selection Guide				
Part Number	Input Voltage (VDC)	Output Voltage (VDC)	Output Current (mA)	Efficiency (%)
CG-0305	3.3	5	250	70
CG-0309	3.3	9	139	70
CG-0312	3.3	12	104	72
CG-0315	3.3	15	83	75
CG-0503	5	3.3	378	70
CG-0505	5	5	250	70
CG-0509	5	9	139	76
CG-0512	5	12	104	80
CG-0515	5	15	83	82
CG-1205	12	5	250	70
CG-1209	12	9	139	76
CG-1212	12	12	104	80
CG-1215	12	15	83	82
CG-1505	15	5	250	70
CG-1509	15	9	139	76
CG-1512	15	12	104	80
CG-1515	15	15	83	82
CG-2405	24	5	250	70
CG-2409	24	9	139	76
CG-2412	24	12	104	80
CG-2415	24	15	83	82

Package Style And Pinning (mm)



PIN	FUNCTION
1	-VIN
4	+VIN
5	+VOUT
6	NC
8	-VOUT



Note : Terminal ----- 0.51" Dia. Typical
 TOL. : ± 0.25 mm
 UNIT : mm